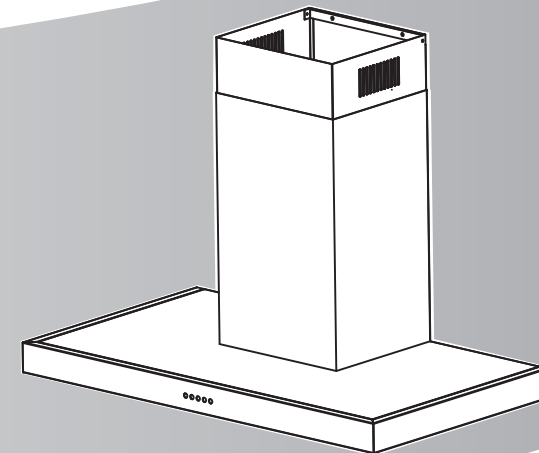


COOKER HOOD INSTRUCTION

PACKING LIST

NO.	NAME	QUANTITY
1	Main body	1
2	User instructions	1
3	Bracket assembly	1
4	Expanding screw	6
5	Expanding plug	6
6	Screw ST4*10	2
7	Plastic Exhaust Pipe	1
8	Hood	2
9	Alum. filter	3 (HC60LIN 2)
10	Cable ties	1
11	Drill hole stenci	1
12	Charcoal Filter	2



MODEL **CH90LIN**
CH60LIN



Carefully read this cooker hood user instructions before using
Read and save these instructions



Preface

Congratulations on the purchase of our Cooker hood, which is designed to include many superior features that permit you the fullest expression of your living.

Please read the attached documents carefully before installing and/or using the cooker hood, which include important installation, usage, and safety directions. And please preserve all the documents appropriately for future reference. Our company does not take any responsibility if a problem arises because of ignorance of the instructions offered by these documents.



Correct Disposal of this product

This marking indicates that this product should not be disposed of with other household wastes. To prevent possible harm to the environment or human health from uncontrolled waste disposal, recycle it responsibly to promote the sustainable reuse of material resources. To return your used device, please use the return and collection systems or contact the retailer where the product was purchased. They can take this product for environmental safe recycling.



Contents

Information and advice

Information and advice----- 1

Know your cook hood

Parts generalization-----2

Using method

Establishment of function-----3

Data-----3

Installation

Installation position and height-----4

Fixing the cooker hood-----5

Exhaust pipe conjunction-----7

Installation of chimney-----8

Troubleshooting

Troubleshooting-----9

Maintenance

Clean the metal filter-----10

Replacing Bulb-----11

Mount the charcoal filter-----11



INFORMATION AND ADVICE

Information and advice

- All packing materials are environmental protections and therefore recyclable. Please deal with all the materials with environment protecting attitude.
- This cooker hood is designed for family cooking only so fix it in the kitchen.
- Only maintenance staff with professional training and maintenance qualification can maintain the cooker hood. Other personnel are not permitted to open the cooker hood and maintain it, so as to avoid serious consequences.
- If you find obvious damage on the cooker hood, please do not connect the electrical plug, and contact the local customer service center or dealer immediately
- If the supply cord is damaged, it must be replaced by the manufacture or its service agent or similarly qualified person in order to avoid a hazard.
- This appliance is not intended for use by persons (including children) with reduced physical, sensory or mental capabilities, or lack of experience and knowledge, unless they have been given supervision or instruction concerning use of the appliance by a person responsible for their safety. Children should be supervised to ensure that they do not play with the appliance.

In certain circumstances electrical appliance may be a danger hazard.

- There shall be adequate ventilation of the room when the cooker hood is used at the same time as appliances burning gas or other fuels.
- Do not check the status of the filters while the cooker hood is operating.
- Do not touch the light bulb within half an hour after appliance use.
- Do not flambe under the cooker hood.
- Avoid opening gasometer when there is no pan on the stove , as it is damaging for the filters and a fire hazard
- Constantly check food frying to avoid that the overheated oil may become a fire hazard.
- Disconnect the electrical plug prior to any maintenance
- The power socket must be attainable after installation
- The air must not be discharged into a flue that is used for exhausting fumes from appliances burning gas and other fuels.
- Regulations concerning the discharge of air have to be fulfilled.

1

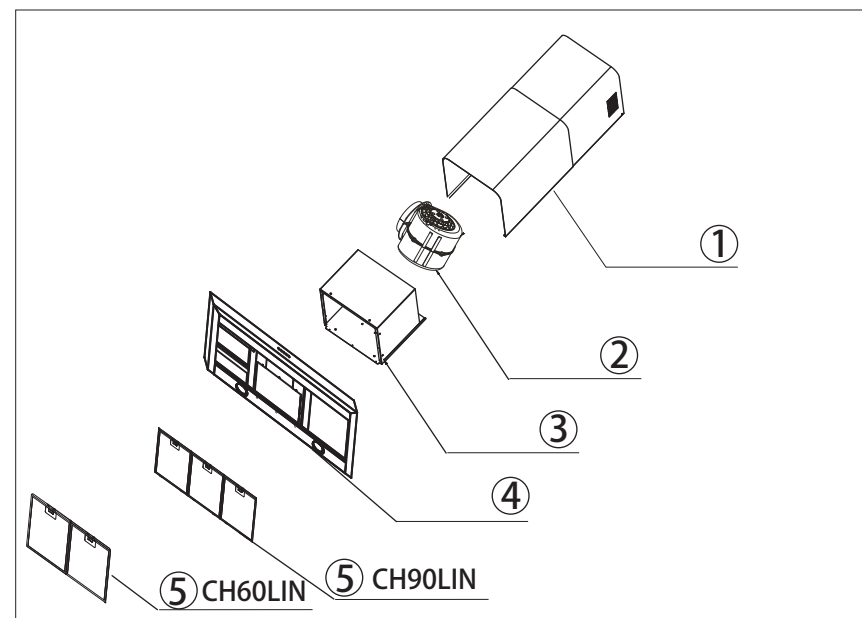
Cooker hood



KNOW YOUR COOK HOOD

- Please do not leave the kitchen at will when you cook using animal tallow or vegetable oil, so as to avoid damaging the cooker hood because of overheat or causing a fire by igniting the remaining oil in the cooker hood.
- Make sure that all the lighting bulb, oil-filter of the cooker hood are correctly fixed before using.
- Please do not put in or pull out the plug of the power supply with your wet hand.
- Please make sure that the power system of your house (current, voltage, and connecting lead) can satisfy the normal load request of the cooker hood.
- Please do not use fuse with high power capacity .

Parts generalization



- | | |
|--------------------------------------------------------|-----------------------|
| 1. Hood | 2. Air duct assembly |
| 3. Bellows | 4. Main body assembly |
| 5. Filter assembly CH90LIN 3 Filter, CH60LIN 2 Filter. | |

2

Cooker hood



USING METHOD

Establishment of function

Mechanism

Model 1:

0 1 2 3

control

Electronism

EI

1

Press the the switch of light to be on, the bulbs light on. Otherwise the bulbs don't work.
When press the push button "1" or "I" or "I" or "I" on, the motor runs at low speed.
When press the push button "2" or "II" or "II" or "II" on, the motor runs at middle speed.
When press the push button "3" or "III" or "III" or "III" on, the motor runs at high speed.
When press the push button "0" or "O" or "O" on, the motor stops running.

Data

Power Supply: 220-240V~ 50Hz

Rating: 280 watts

Light: Lamp 2 x 40 watts

Our policy is one of continual improvement in design and development, therefore strict accuracy of illustrations and descriptions cannot be guaranteed.

This appliance conforms to the following EC Directive:



This appliance meets the provisions Of the following directives:

2004/108/EC (electromagnetic compatibility), 2006/95/EC (electrical equipment designed for use within certain voltage limits) as amended.

Retention of this instruction book.

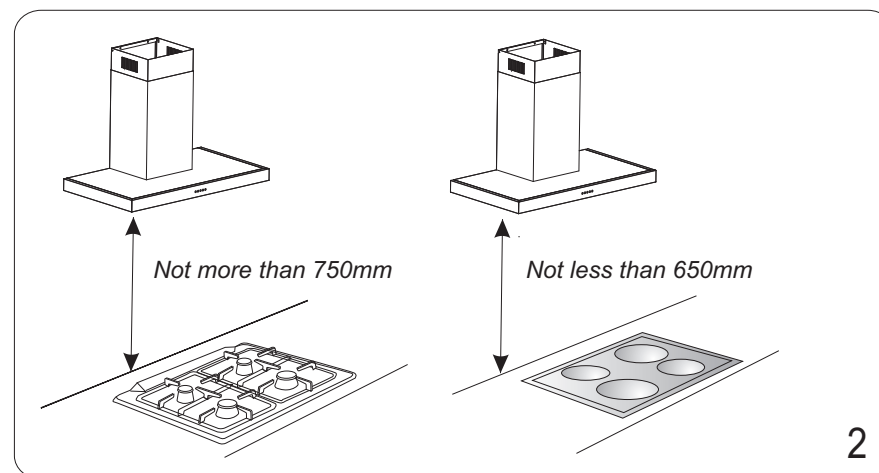
Keep this book in a handy place for reference. It contains important details on the safe and proper use of your appliance.



INSTALLATION

Installation position and height

- Please install the cooker hood at the dry place without direct sunlight.
- There should be enough intensity and smooth and straight surface about the metope which is used for fixing the cooker hood. Thus it can make the cooker hood stable, without any shaking.
- The cooker hood should be fixed right above and on the same axis as the stove.
- We recommend that after installation the bottom of the hood should be not less than 650mm and not more than 750mm above the stove's heating elements and burners.



This cooker hood must be earthed. It must be put in the indeed earthed socket.



INSTALLATION

Fixing the cooker hood

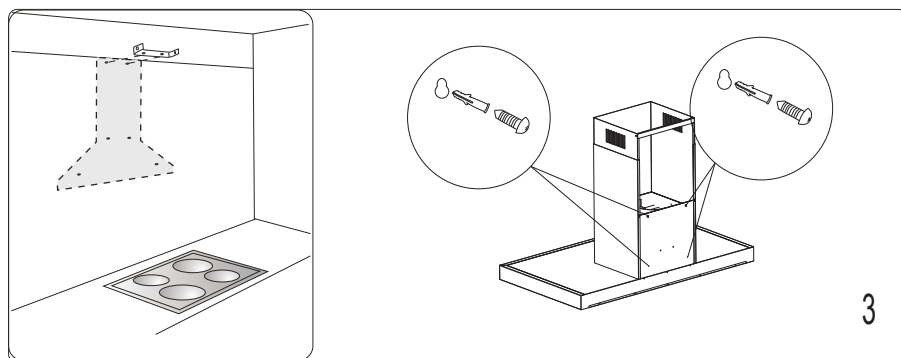
Ensure the power has been turned off before beginning this installation.

To install this hood you will require two assistants.

You will need the following tools and material to complete this installation:

*Drill*Flat head screwdriver*Phillips head screwdriver or cordless drill and Phillips head bit*Tin snips*3/8" nut driver or ratchet with extension
*measuring tape*hand saw or jig saw*electrical tape*duct tape

1. Remove the range hood from the carton.
2. Lay the hood upside down on a table covered with cardboard or paper to prevent scratching of the table or hood.
3. Hood installation should be within 0.8m radius range from the socket.

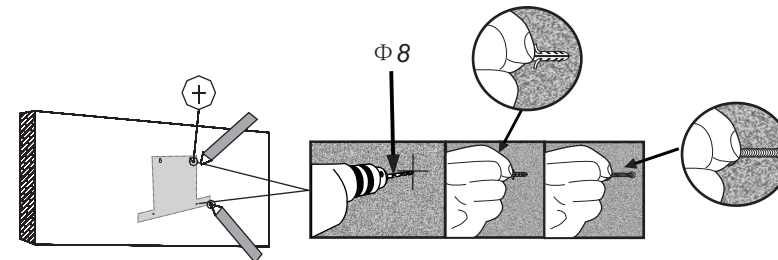


3

According to the Fig.3, make sure the position of the hoods on the wall. Then use the stencil to drill four holes $\Phi 8$ mm on the wall. Fix four sets expanding plugs and screws aimed at the four holes.

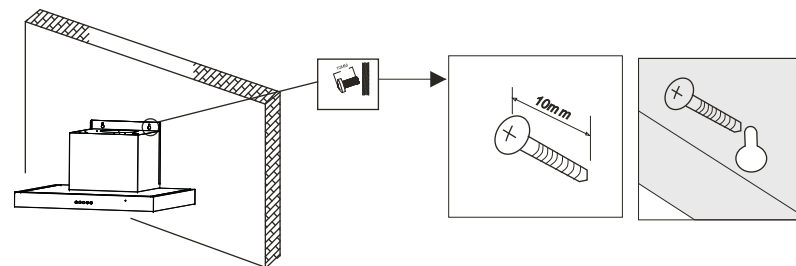


INSTALLATION



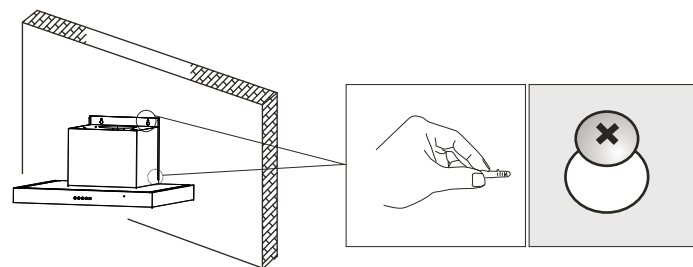
4

Hang the hood and let it's 4 installation holes aim at 4 screws, Adjust it to setting position.



5

Please make sure the outside dimension of the screws is 10mm.



6

Screw down the four crews. first screw down the upper two screws, then screw down the nether two screws.

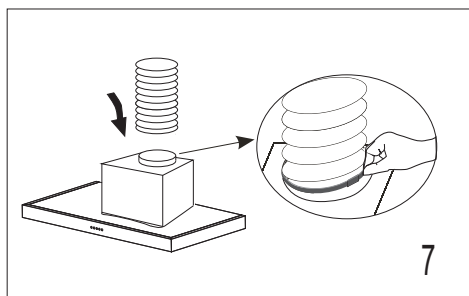


INSTALLATION

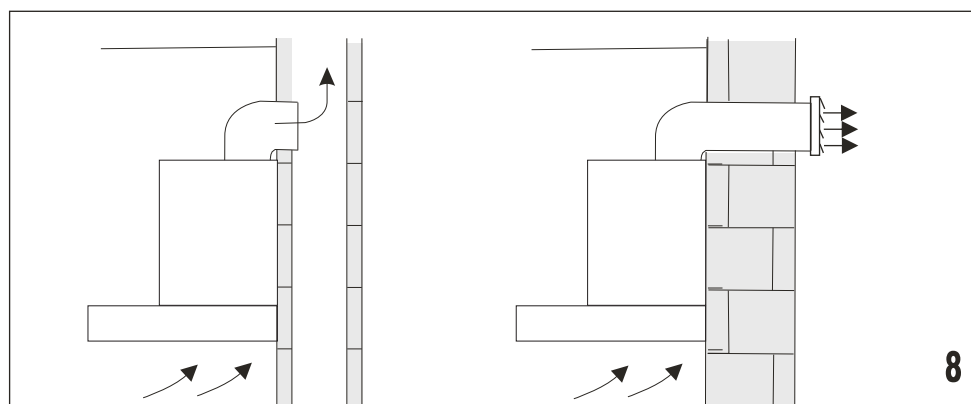
Exhaust pipe conjunction

To better discharge fume in the kitchen:
Please select appropriate exhaust pipe according to damper diameter size.

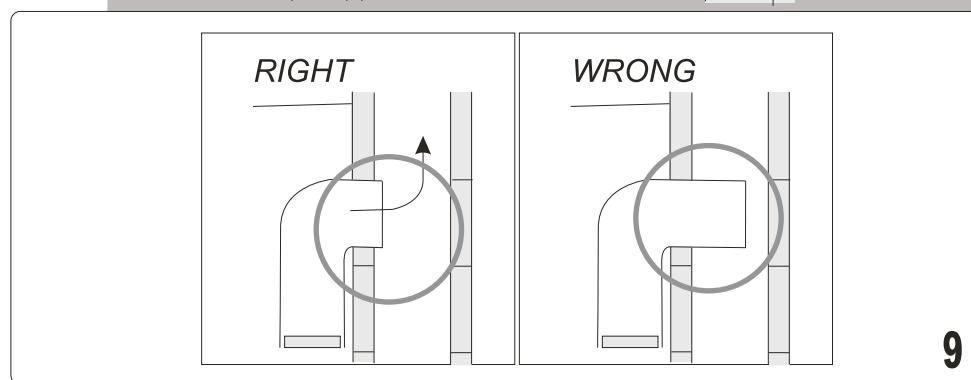
Please connect one end of the exhaust pipe with the cooker hood and tied with cable ties, and the other End with public flue or the hole of the wall.



7



8



9

7

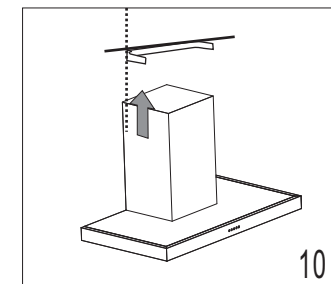
Cooker hood



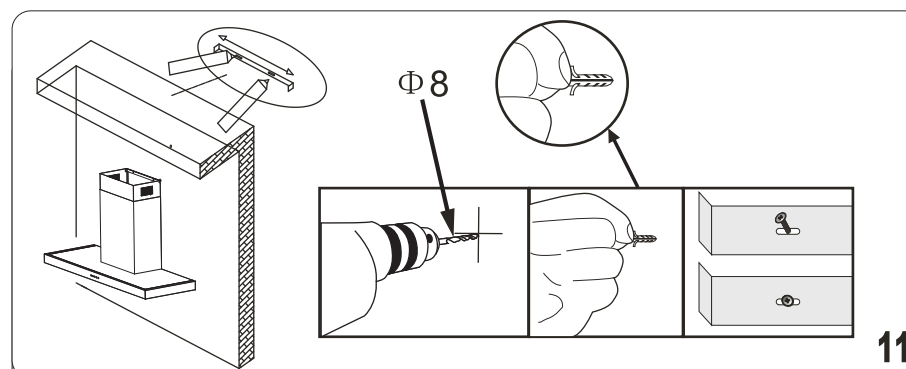
INSTALLATION

Installation of chimney

According to the dimension of the chimney fixed bolster, make sure the position of the chimney.

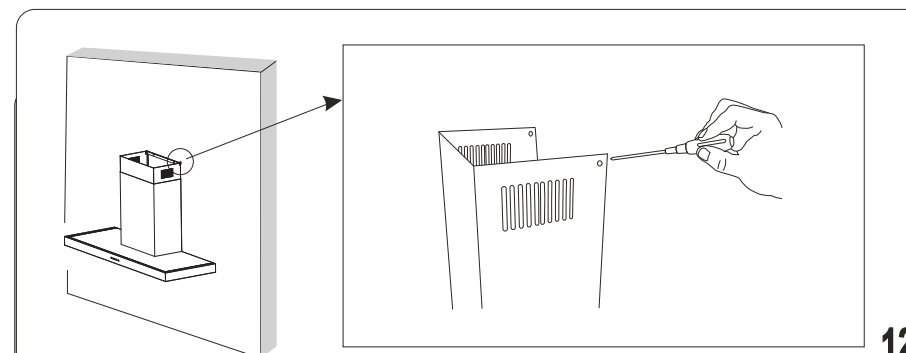


10



11

Install the chimney fixed bolster on the corresponding position on the wall.



12

Use the Screw ST4*10 to connect the chimney fixed bolster and the Upper chimney.

8

Cooker hood



TROUBLESHOOTING

Troubleshooting

Before you assume the worst, check this simple fault-finding guide to get to the root of the problem:

Light bulb doesn't come on

A replacement is probably necessary, but check first that the bulb is firmly screwed in to its holder. If the Filament is broken, remember that the light bulbs are not covered by our guarantee. Remember to disconnect the mains electricity supply before removing the bulbs

Motor is on but no air is being sucked up

Switch off immediately and check that the setting lever is set to the appropriate mode for your application.

Motor is on but fan doesn't seem to be as efficient as usual

Check the grease filter. If it has not been cleaned or be replaced recently, it might be clogged with grease. If filter is relatively clean, check charcoal filter. If this hasn't been replaced for more than six months, remove and insert a new one. As time goes by, accumulated grease tends to stifle the charcoal filter in just the same way as the grease filter, thereby reducing the efficiency of both the fan and the filter itself.

Controls fail to switch motor on

Check plug, socket and fuses. If these are in order and fault persists, it could be that an accumulation of grease has impaired the efficiency of the switch mechanism. Try rapidly moving switch on and off several times in succession to clear grease deposit. If fault continues, call service agent.

Appliance does not work at all

Check your cooker hood is switched on at the mains. Next, check for an unexpected power cut by switching on adjacent lights etc.

Still not working? Call the service agent

If, having consulted the above diagnostic chart you are still unable to remedy the situation, please call the Free -phone service telephone number at the rear of this booklet.

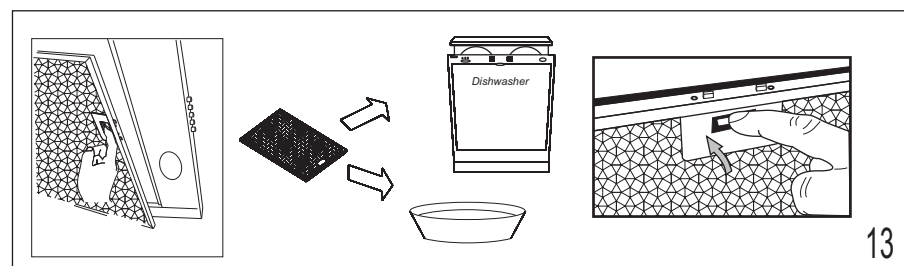


MAINTENANCE

Clean the metal filter

• It is recommendable to clean the metal filter every 2-3 weeks by carrying out the following instructions:

- Remove the metal filter from the cooker hood and wash it in a solution of water and neutral liquid detergent, leaving to soak
- Rinse thoroughly with warm water and leave to dry.
- The metal filter may also be washed in the dishwasher.
- The metal filter may alter in color after several washes. This is not cause for customer complaint nor replacement of metal filter.



There is a fire risk if cleaning is not carried out in accordance with the instructions.

Please disconnect the electric plug prior to clean or maintain the cooker hood.

Please do not wash the cooker hood with water directly.

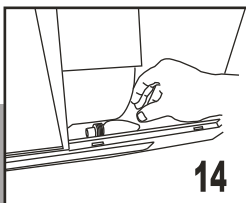
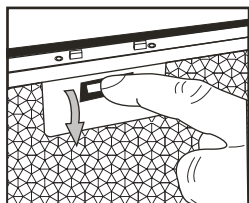
Please clean and maintain the cooker hood periodically according to your using frequency and environment. This can help to keep your cooker hood work well as well as a long working life.



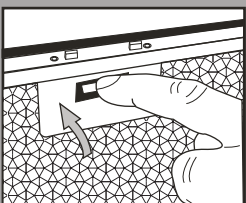
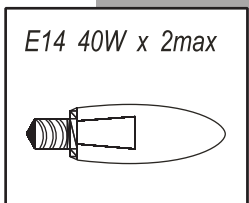
MAINTENANCE

Replacing Bulb

Disconnect the electrical plug prior to any maintenance.



14

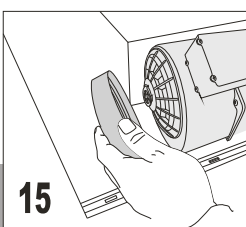
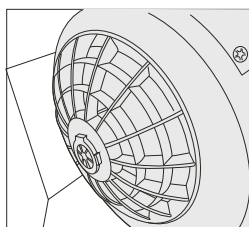


Removing the bulb that need to be replaced, then reinstall the new bulb.

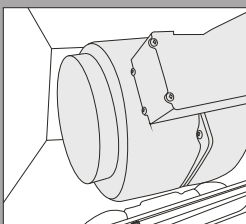
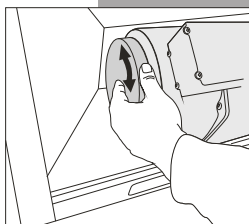
The power of bulb must Not be more than 40W.

1. Take the fixed lamp rim off by unscrewing it in an anti-clockwise direction.
2. Draw the old lamp out of the lamp holder, insert the new lamp in the lamp holder.
3. Screw the fixed lamp rim tightly in a clockwise direction.

Mount the charcoal filter



15



**Only for re-circulation:
mount the charcoal filter**

*Replace the charcoal filter
(charcoal filters can be
supplied as options)*